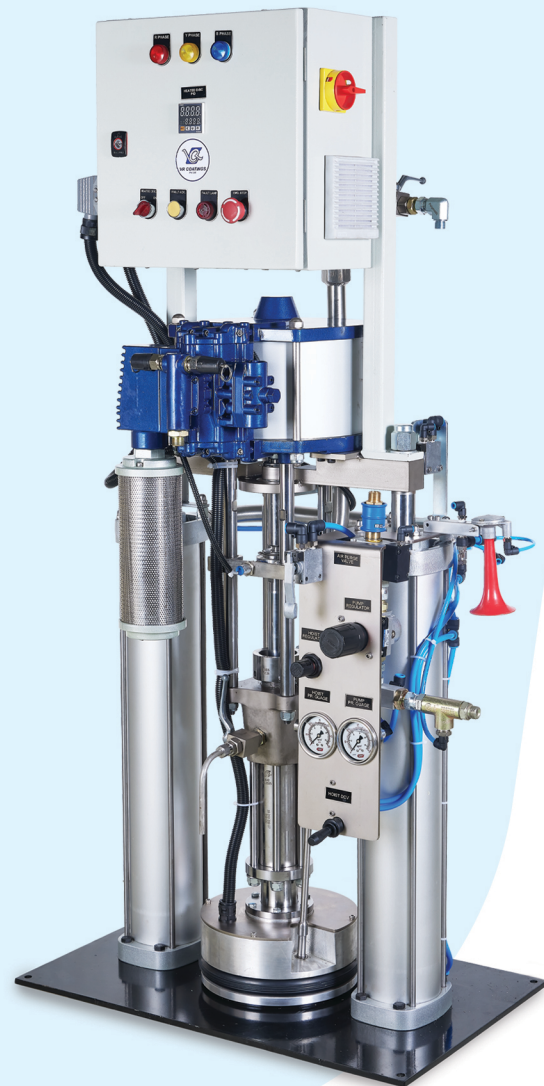


DRUM PRESS

MEDIUM & HEAVY DUTY HEATED AND COLD
AIRLESS DRUM PRESS DISPENSING/ TRANSFER
EQUIPMENT



These are equipped with medium duty or heavy duty range of pumps and are suitable for semi-solid and pasty materials.

FEATURES

- ◆ High flow rate pumps
- ◆ Priming piston (shovel) type suction for high viscous fluids
- ◆ Auto shut off for pumps on drum empty
- ◆ Option for twin pail switchover system
- ◆ Drum capacity up to 200 liters.
- ◆ Custom built system for non-standard drum size.
- ◆ Dispensing/spraying nozzles to suit your application

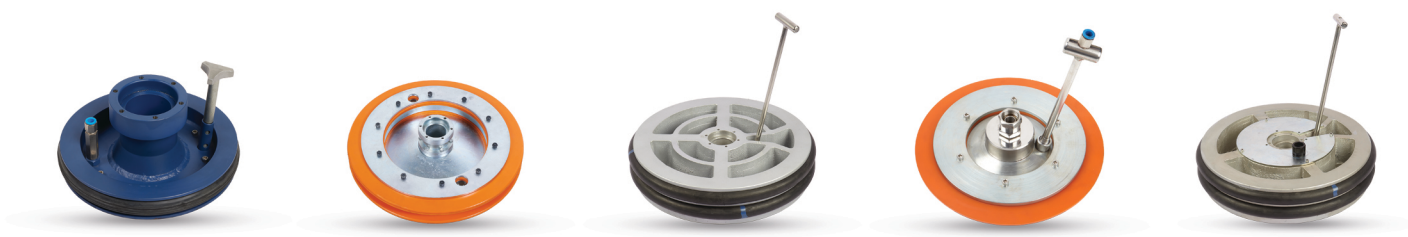
APPLICATIONS

- ◆ High Viscosity Material Handling

Designed for dispensing and transferring grease, sealants, and other high-viscosity materials.

Ensures efficient material flow directly from standard drums with minimal wastage.

ACCESSORIES



TECHNICAL SPECIFICATIONS

Type	28:550	28:920	30:150	40:110	55:275	60:350	65:175	75:210
Pressure ratio	28:1	28:1	30:1	40:1	55:1	60:1	65:1	75:1
Discharge per cycle (cc)	550	920	150	110	275	350	175	210
Air motor piston diameter (mm)	300	350	160	160	300	350	250	300
Stroke length (mm)	120	200	120	120	120	120	120	120
Recommended dispensing volume @10 cycles/min (lpm)	5.5	9.2	1.5	1.1	2.75	3.5	1.75	2.1
Air inlet pressure maximum (bar)	6	6	6	6	6	6	6	6
Maximum output pressure @ 6 bar inlet	168	168	180	240	330	360	390	450
Air consumption N litres/min @15 cycles /minute	945	2700	340	340	1190	825	825	1190

*Other ratios as per your requirement



VR Coatings Pvt.Ltd.

Registered Office:
J-138 MIDC,
Bhosari, Pune 411026
Maharashtra,INDIA

☎ +91 98 2291 29 14
✉ sales@vrcoatings.com
🌐 www.vrcoatings.com

